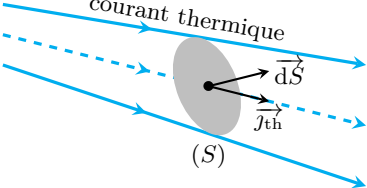


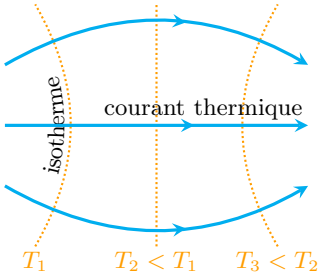
courant thermique

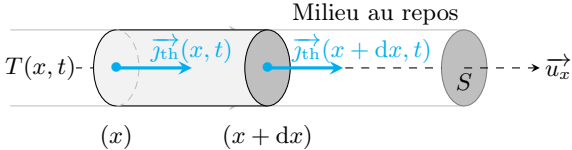
$\vec{dS}$

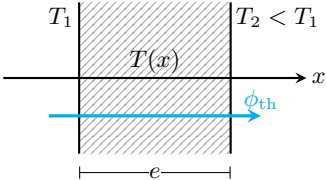
$\vec{j}_{th}$

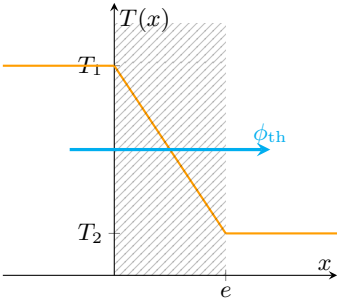
$(S)$

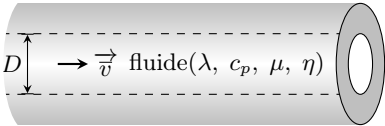


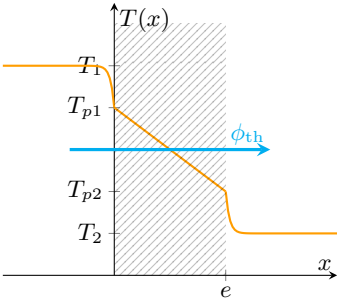






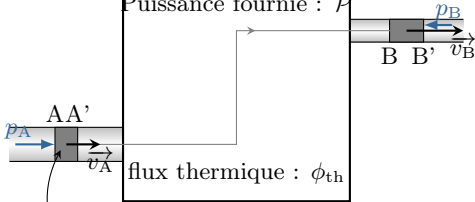






# Machine hydraulique

Puissance fournie :  $\mathcal{P}$



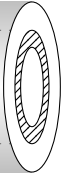
flux thermique :  $\phi_{th}$

$$dm = \mu v_A dt S_A$$



→  $D_f$     fluide froid

→  $D_c$     fluide chaud



$\leftarrow D_f$     fluide froid

$\rightarrow D_c$     fluide chaud

