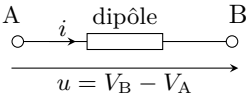
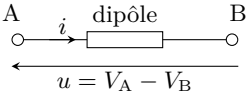
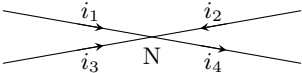


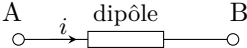
# Convention générateur



# Convention récepteur

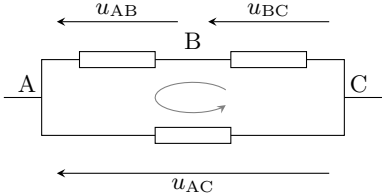






A long horizontal arrow pointing from right to left, spanning the width of the diagram below the circuit.

$$u_{AB} = V_A - V_B$$

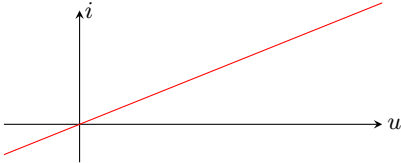
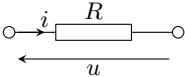




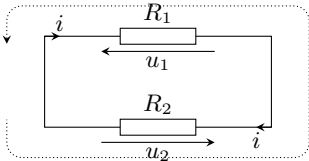
ligne de masse

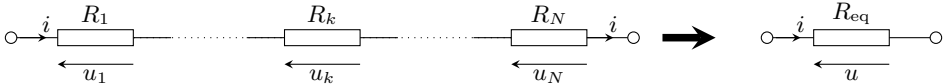


ligne de terre

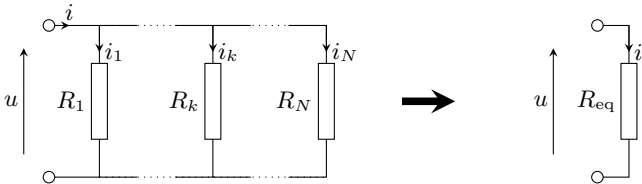


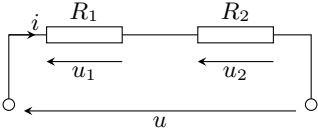
sens de parcours

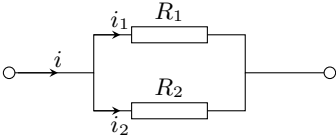


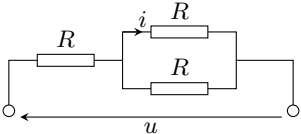


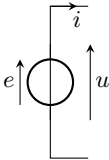


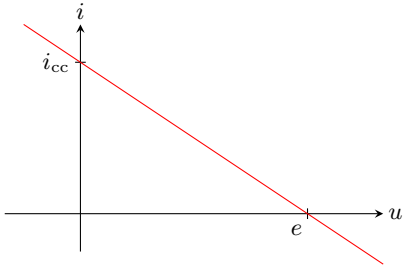
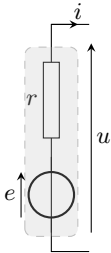


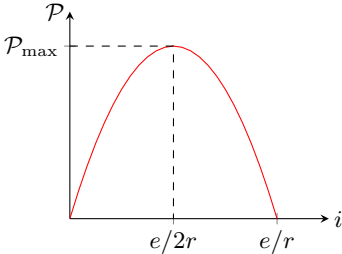


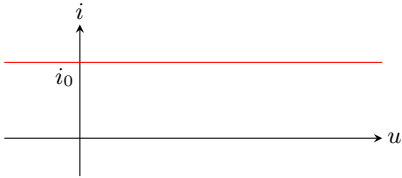
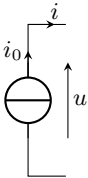




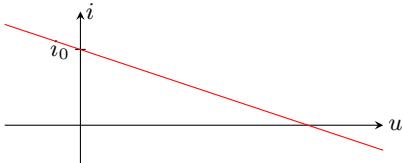
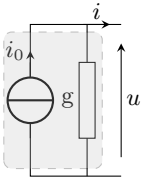


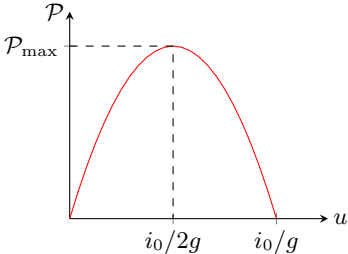


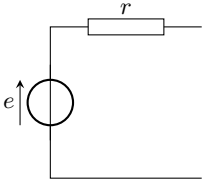




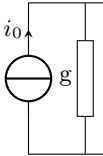


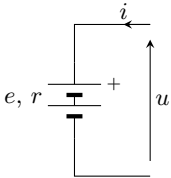




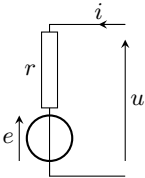


$$\begin{array}{c} g = 1/r \\ \longleftrightarrow \\ i_0 = e/r \end{array}$$



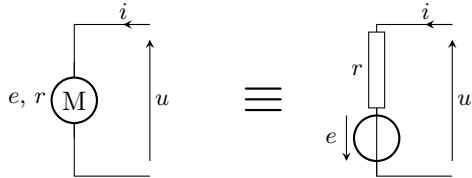
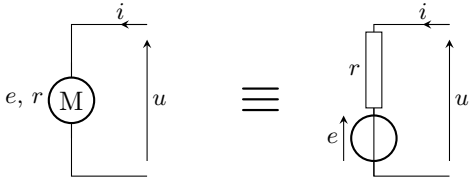


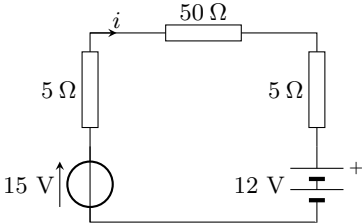
$\equiv$

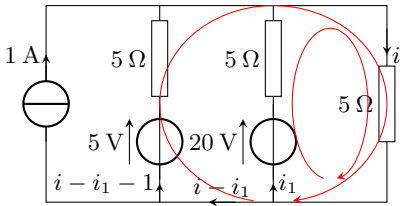
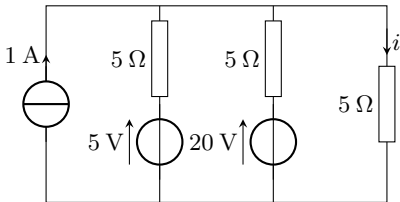


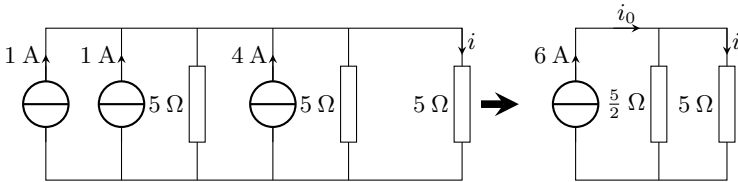
Cas où  $i > 0$  :  $u = e + ri$

Cas où  $i < 0$  :  $u = -e + ri$

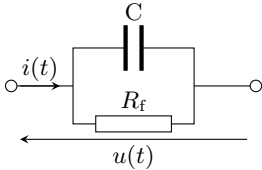
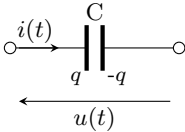


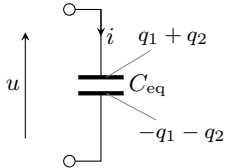
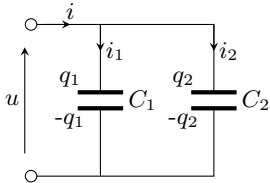


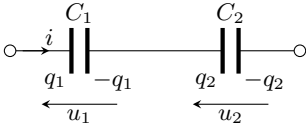




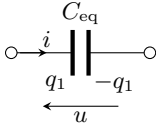


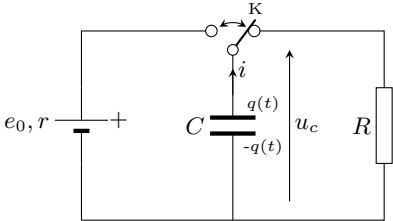


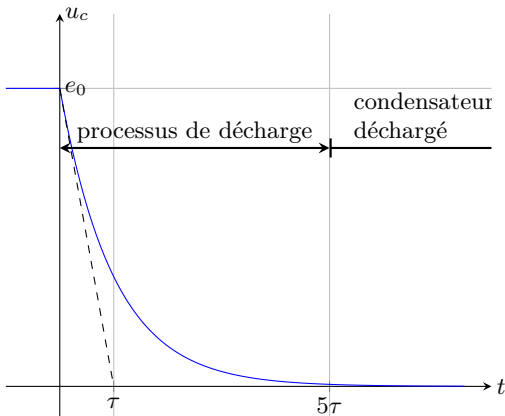


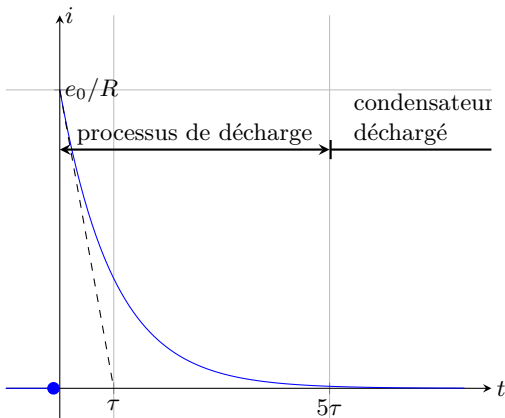


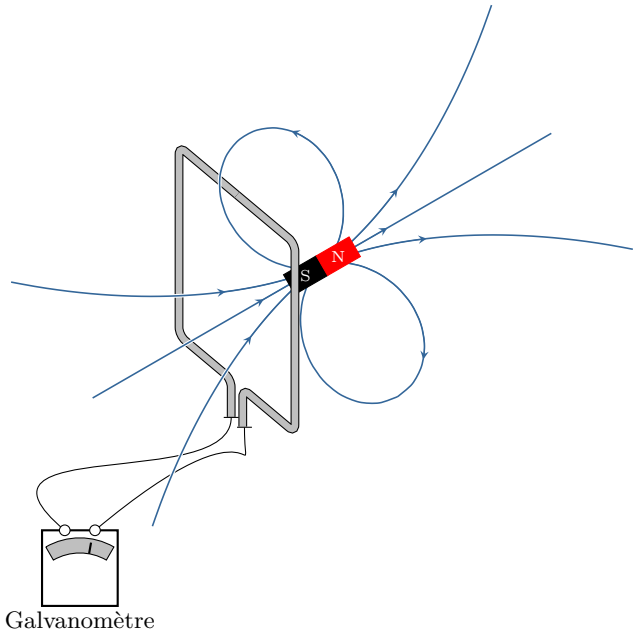
si  $q_1 = q_2$



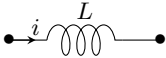




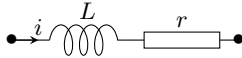




bobine idéale



bobine réelle  
(basse fréquence)



bobine réelle  
(haute fréquence)

